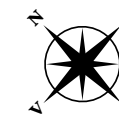


2. etasje



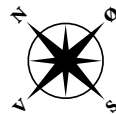
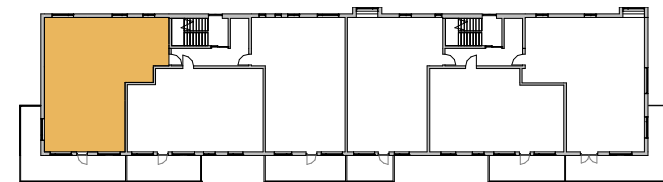
Fra balkongene i andre etasje begynner utsikten å bli friere og videre. Høyden er omtrent den samme som fjerde etasje i Forum Jæren, men utsikten er åpnere mot sørvest. Etasjen har seks leiligheter fra 93 til 120 kvm.





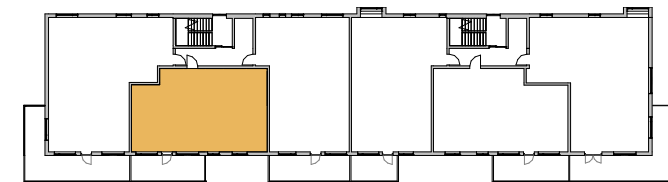
2A
BRA 120,0 m²

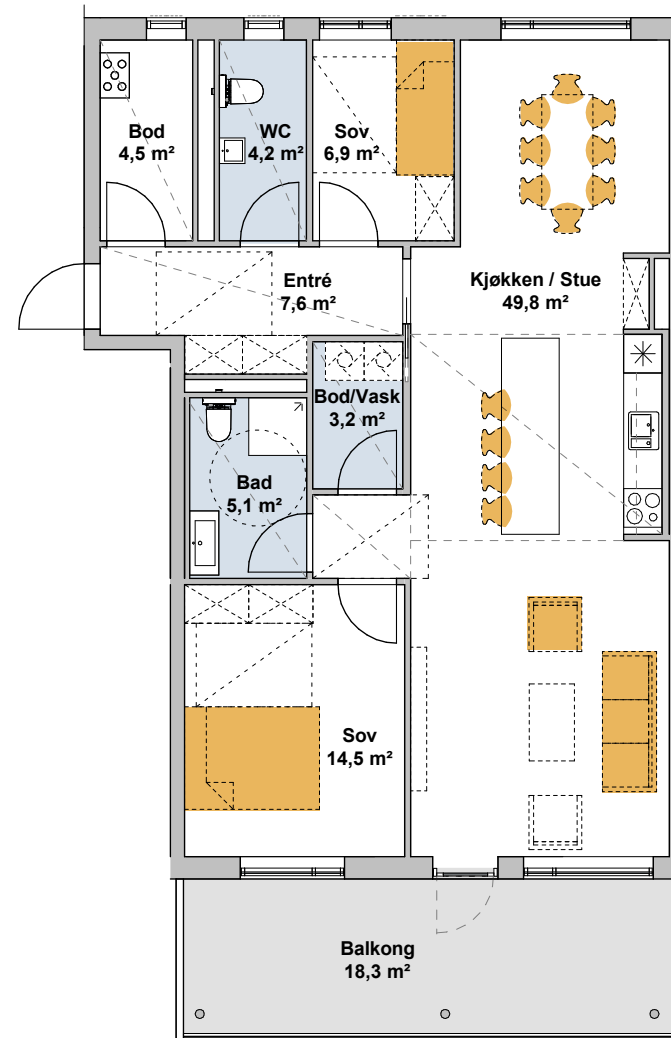
Etasje	2
P-ROM	114,3 m ²
S-ROM	5,7 m ²
Uterom	32,6 m ²
Rom	3-4



2B
BRA 96,0 m²

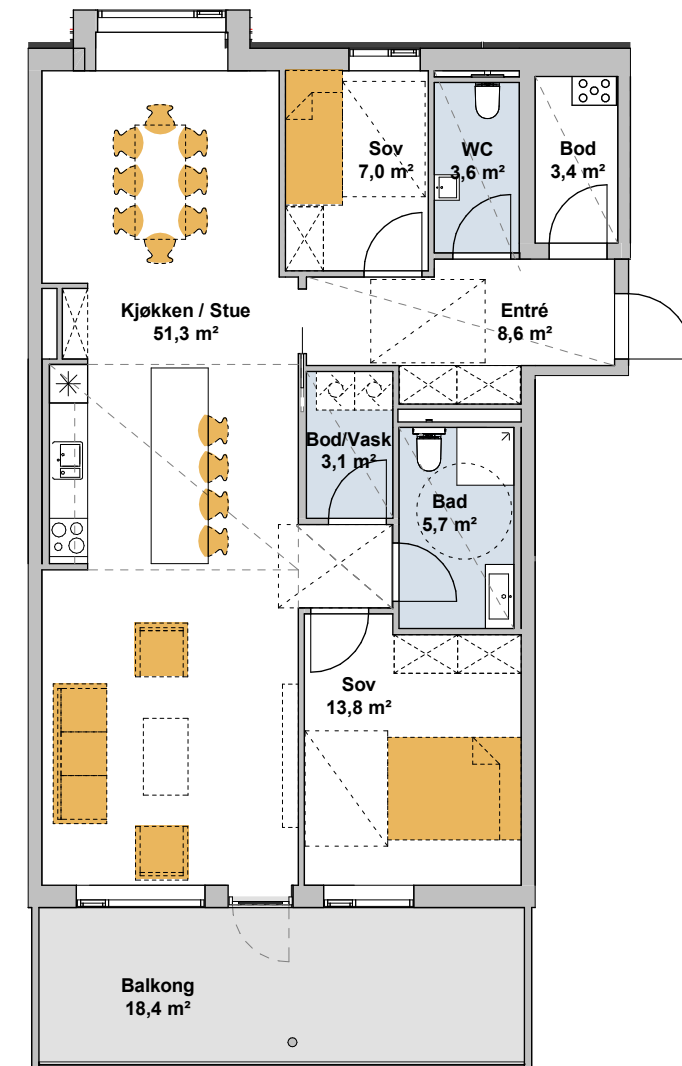
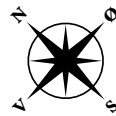
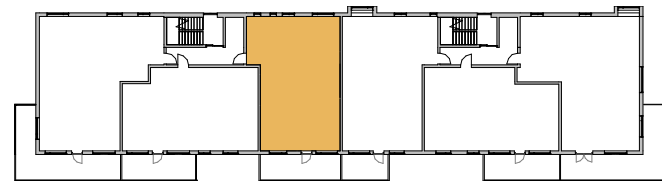
Etasje	2
P-ROM	87 m ²
S-ROM	9 m ²
Uterom	16,6 m ²
Rom	3





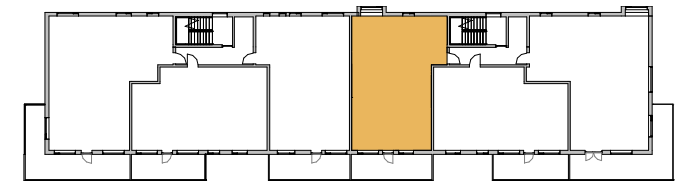
2C
BRA 101,9 m²

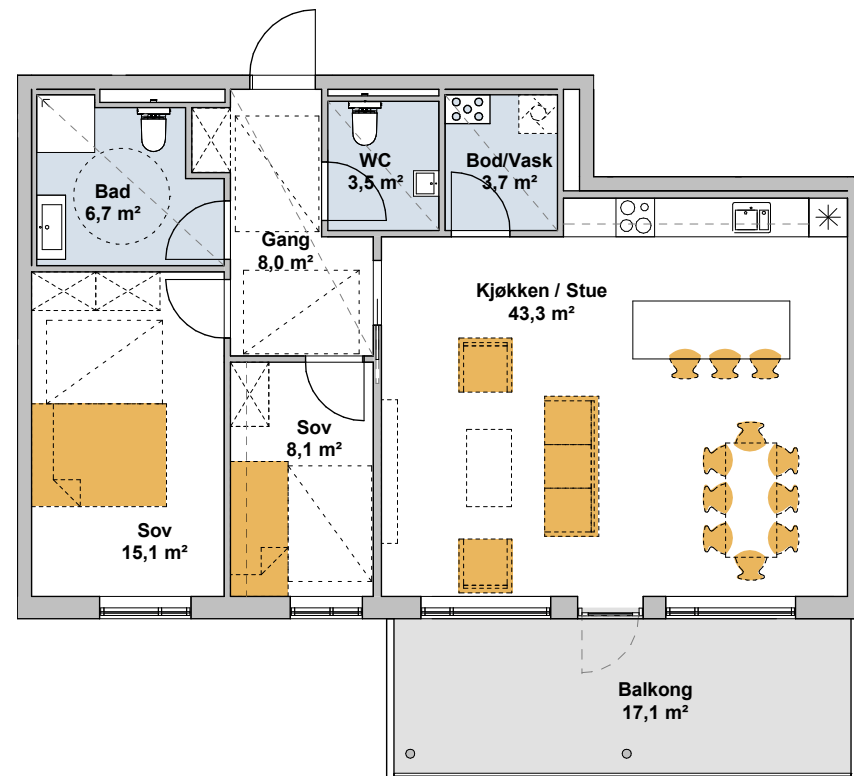
Etasje	2
P-ROM	92,2 m ²
S-ROM	9,7 m ²
Uterom	18,3 m ²
Rom	3



2D
BRA 102,5 m²

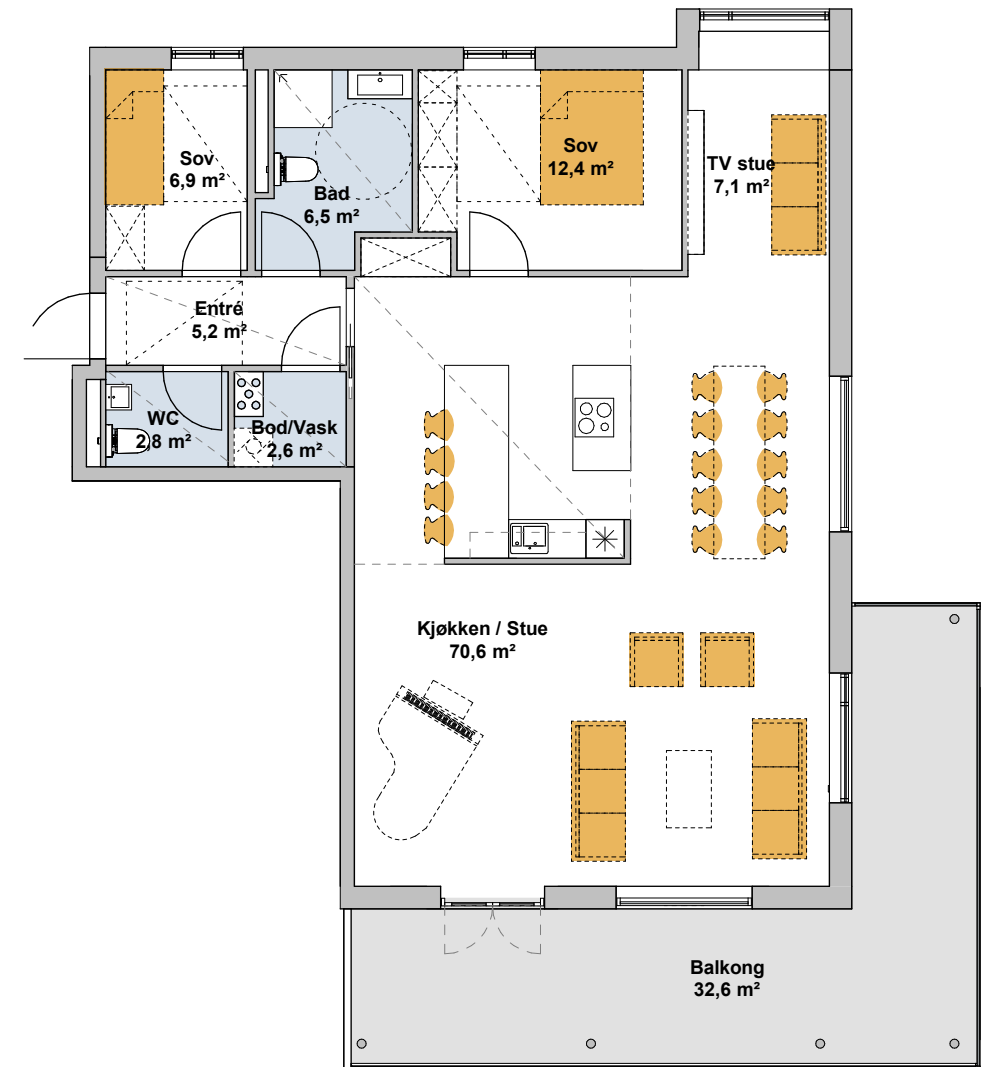
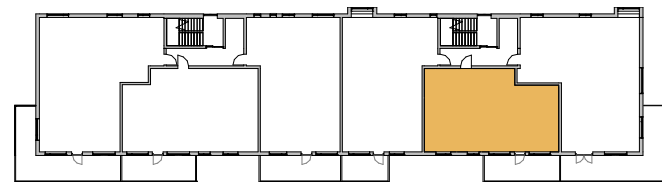
Etasje	2
P-ROM	93,5 m ²
S-ROM	9 m ²
Uterom	18,4 m ²
Rom	3





2E
BRA 93,6 m²

Etasje	2
P-ROM	89,2 m ²
S-ROM	4,4 m ²
Uterom	17,1 m ²
Rom	3



2F
BRA 118,2 m²

Etasje	2
P-ROM	115,1 m ²
S-ROM	3,2 m ²
Uterom	32,4 m ²
Rom	3-4

