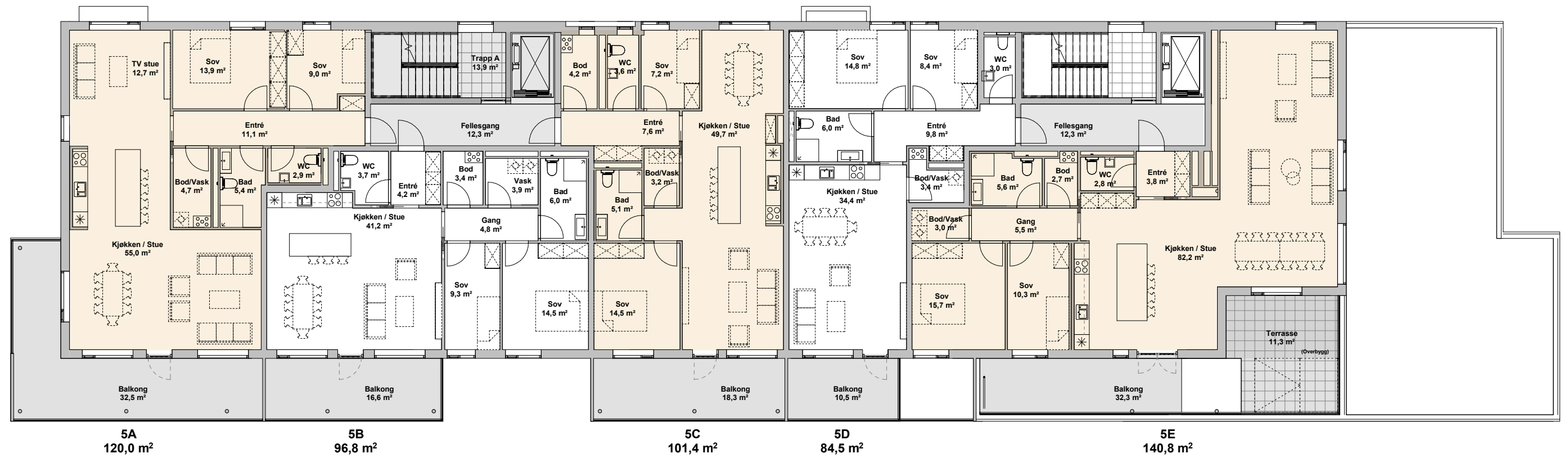


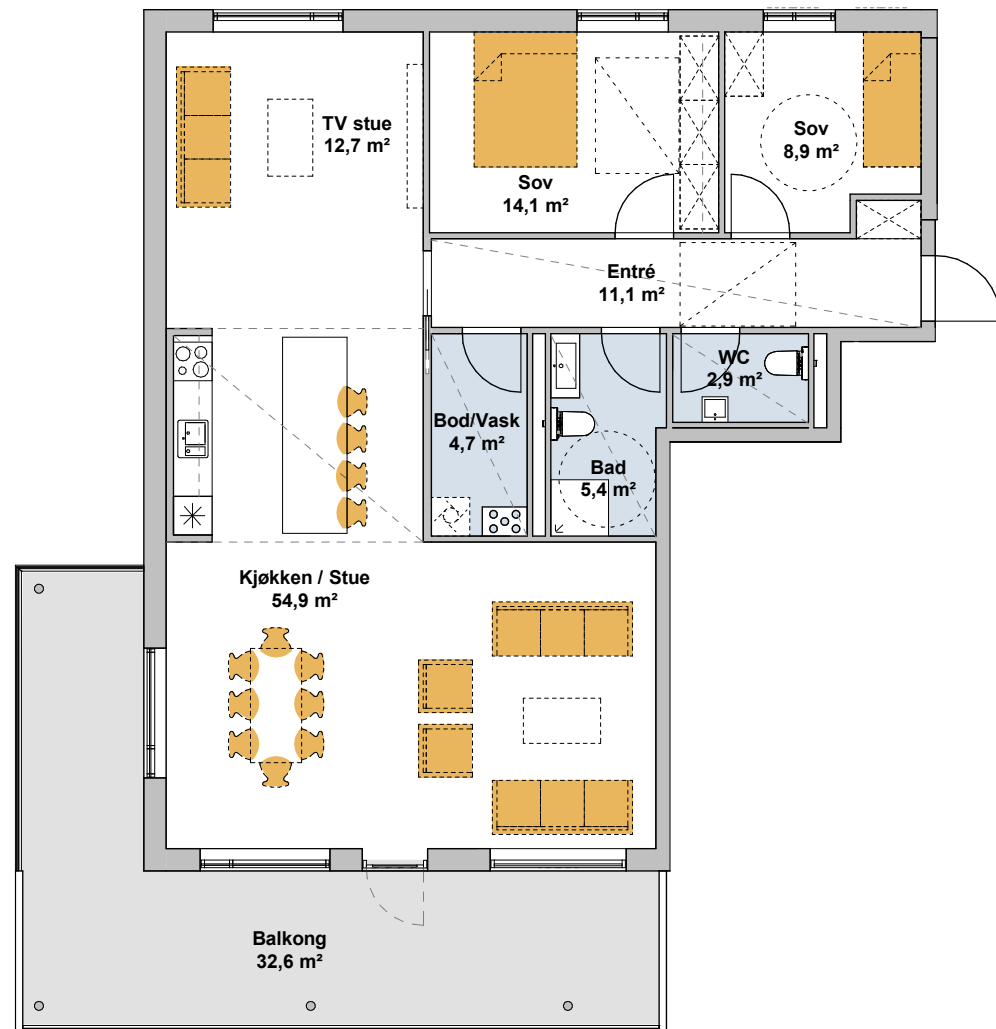
## 5. etasje



Femte etasje har fem leiligheter fra 84 til 141 kvm. Den største har også særdeles romslig uteplass på hele 43,6 kvm.

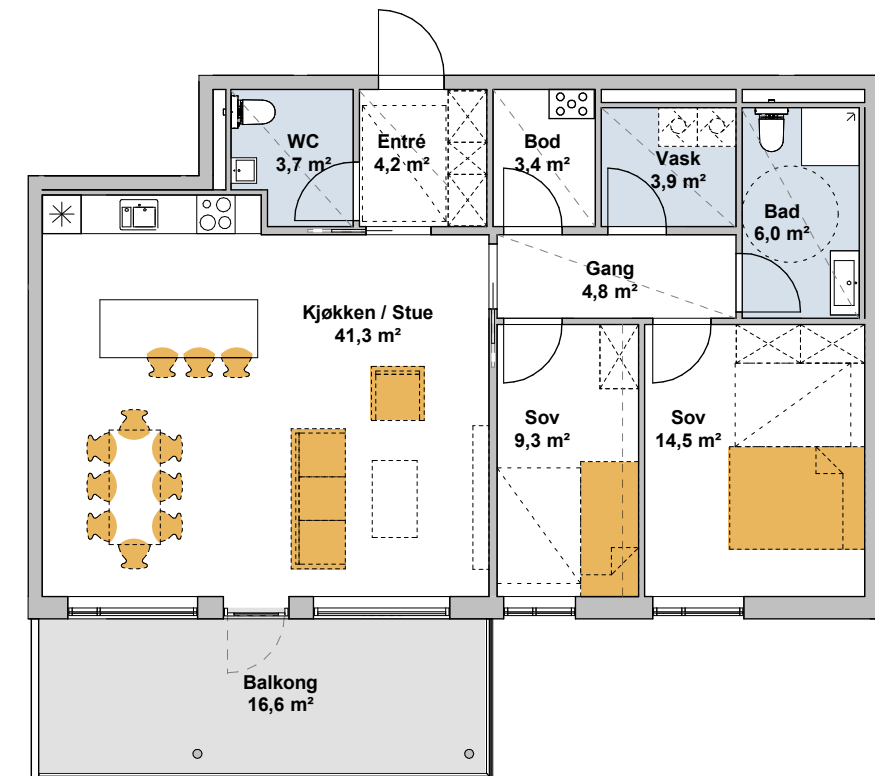
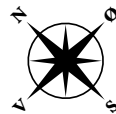
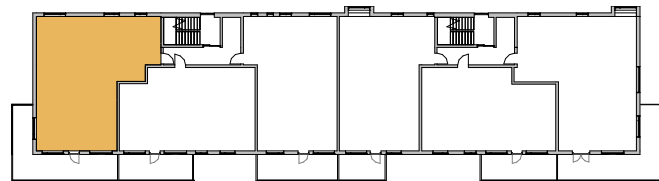
Fire av leilighetene er gjennomgående og har nydelig utsikt også mot øst. Høyden er omtrent den samme som sjuende etasje i Forum Jæren, og utsikten er imponerende.





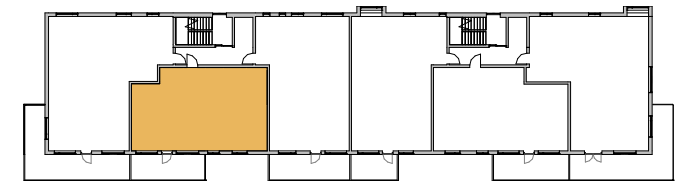
**5A**  
BRA 120,0 m<sup>2</sup>

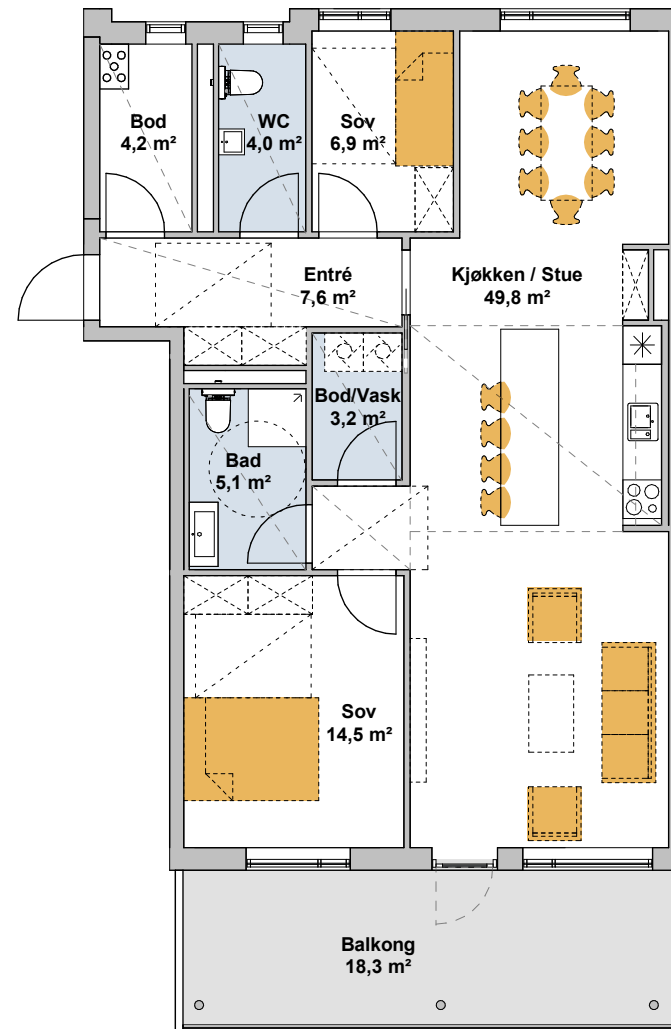
Etasje	5
P-ROM	114,3 m <sup>2</sup>
S-ROM	5,7 m <sup>2</sup>
Uterom	32,6 m <sup>2</sup>
Rom	3-4



**5B**  
BRA 96,0 m<sup>2</sup>

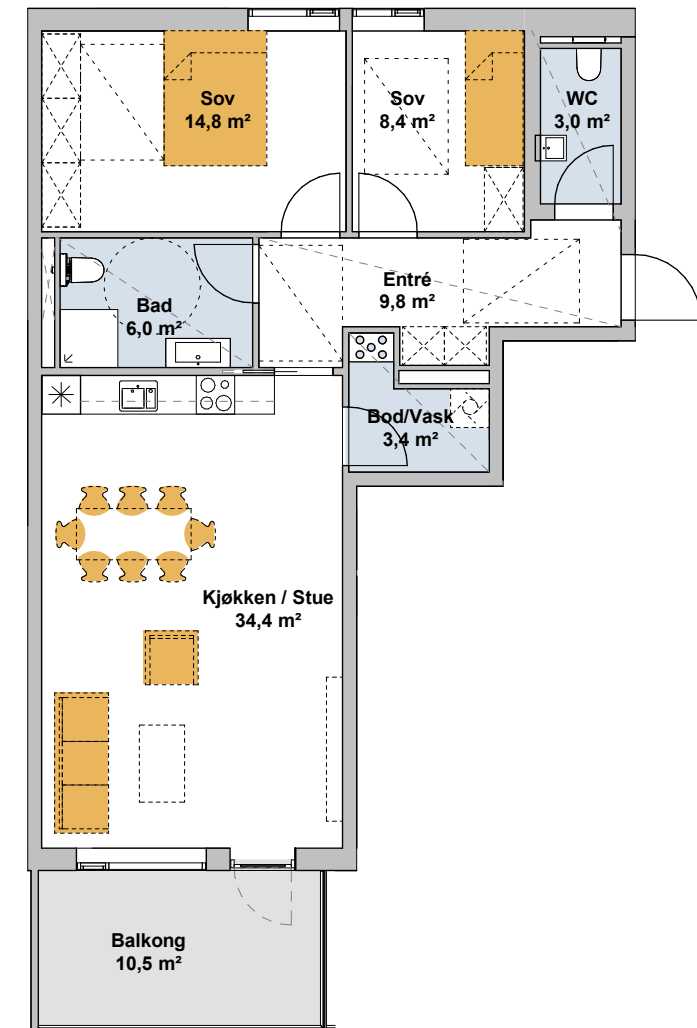
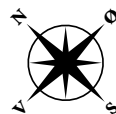
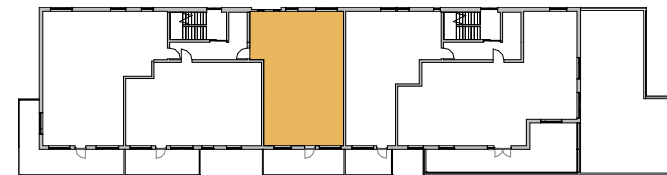
Etasje	5
P-ROM	87 m <sup>2</sup>
S-ROM	9 m <sup>2</sup>
Uterom	16,6 m <sup>2</sup>
Rom	3





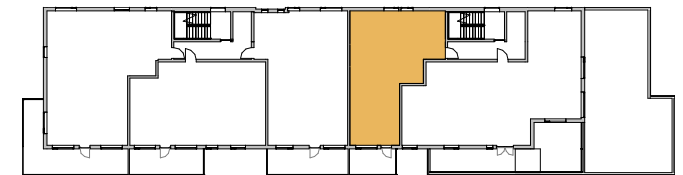
**5C**  
BRA 101,4 m<sup>2</sup>

Etasje	5
P-ROM	91,7 m <sup>2</sup>
S-ROM	9,7 m <sup>2</sup>
Uterom	18,3 m <sup>2</sup>
Rom	3



**5D**  
BRA 84,5 m<sup>2</sup>

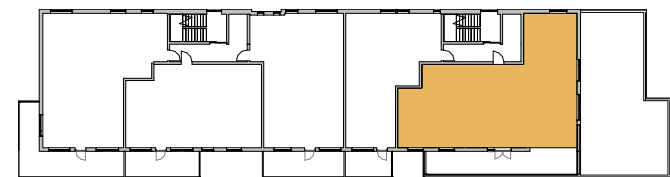
Etasje	5
P-ROM	80,2 m <sup>2</sup>
S-ROM	4,3 m <sup>2</sup>
Uterom	10,5 m <sup>2</sup>
Rom	3





**5E**  
BRA 140,8 m<sup>2</sup>

Etasje	5
P-ROM	134,1 m <sup>2</sup>
S-ROM	6,7 m <sup>2</sup>
Uterom	43,6 m <sup>2</sup>
Rom	4



Endeleiligheten i 5. etasje er på romslige  
141 kvm og med uteplass på 43,6 kvm.  
Utsikten er uhindret i tre himmelretninger.

